

Architects, Engineers, Educators **SPEAK OUT!**

Destruction of World Trade Center Towers 1, 2, & 7: A Case for Controlled Demolition



WTC 7

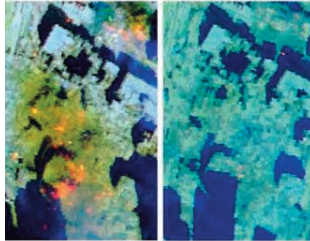
Not hit by an airplane, the 47-story WTC7 collapsed at 5:30 pm into its own footprint in approximately six seconds. WTC7 is not mentioned in The 9/11 Commission Report.



World Trade Center area, New York

HOT SPOTS

US Geological Survey photos show thermal hot spots five days later as high as 727°C at the WTC site. The high surface temperatures suggest much higher temperatures beneath the oxygen-starved rubble piles.



Thermal Hot Spots
September 16, 2001 September 23, 2001

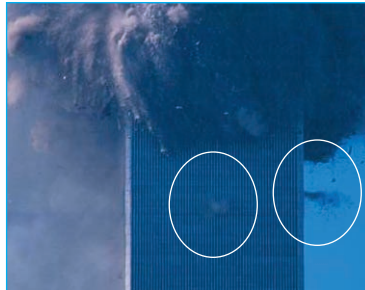
MOLTEN STEEL

Molten steel was found three, four, and five weeks later, when the rubble was being removed (from WTC 1, 2, & 7), said Mark Loizeaux, president of Contrilled Demolitions, Inc., the company in-charge of the clean-up at the WTC site.

SHAPED CHARGES



Angled cuts and previously molten "slag" can be seen in FEMA photos of WTC core columns, typical of those made by shaped charges in a controlled demolition.



SQUIBS

Puffs or jets of dust known as "squibs," caused by the detonation of explosive charges, can be seen emerging from the facade 10 to 20 floors below the exploding rubble cloud, inside of which the tower is disintegrating.

